



**GREEN  
COMPONENT**

**MADE IN  
INDIA**



**PRECISION  
BRIGHT  
COMPONENT**

**ISO & IATF CERTIFIED COMPANY**

# HYDRAULIC CYLINDER

**BY PRECISION BRIGHT  
COMPONENT**



# CYLINDER MOUNTINGS



## MOUNTING TYPE

**HBC**  
SPHERICAL BEARING  
CLEVIS



## MOUNTING TYPE

**HBF**  
BACK FLANGE



## MOUNTING TYPE

**HBR**  
BACK TRUNNION



## MOUNTING TYPE

**HFC**  
FEMALE CLEVIS



## MOUNTING TYPE

**HMC**  
MALE CLEVIS



## MOUNTING TYPE

**HFT**  
FRONT TRUNNION



## MOUNTING TYPE

**HFF**  
FRONT FLANGE



## MOUNTING TYPE

**HFM**  
FOOT MOUNT



## MOUNTING TYPE

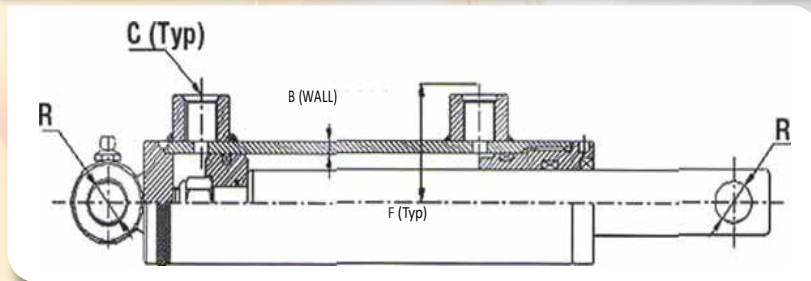
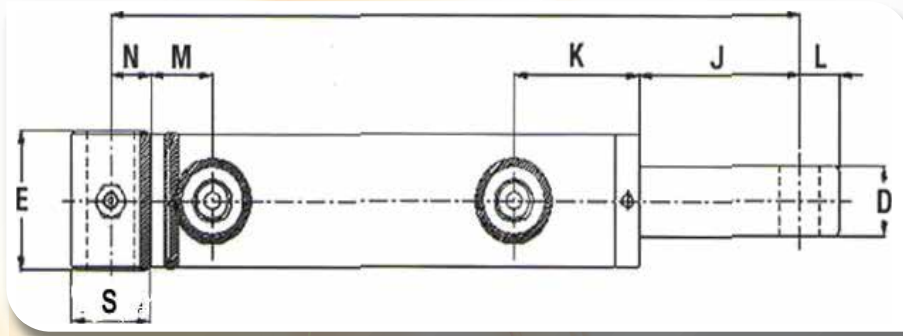
**HIT**  
INTERMEDIATE  
TRUNNION



# CYLINDER HWP



Intended Use: Double-acting applications • Piston: Ductile iron • Gland: Ductile iron • Tube: Skived steel, precision finished for extended seal life • Rod: High tensile, hard chrome plated • Rod End Mounts: Rod eye drilled • Base End Mount: Cross tube C-1026 with grease zerk • Tube Seal: Buna O-ring with Polytemphytrell backup • Rod Seal: Deep polypak with B lip design • Rod Wiper: Urethane, snap-in • Piston Seal: Hallite 755 provides prolonged wear resistance • All Seals: Manufactured to US specifications • Paint: Blue. Custom colors are available • Packaging: Individually poly bagged



## HWP: DIMENSIONAL DATA IN MM

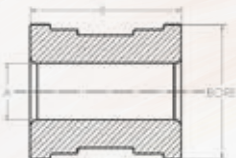
BORE	A CLOSED LENGTH	B WALL THICKNESS	C SOCKET	D ROD DIAMETER	E END CLEVIS LENGTH	F SOCKET TOP TO CENTER OF CYLINDER	J GLAND EDGE TO HOLE DIAMETER	K SOCKET TO GLAND EDGE
40	180	5	3/8" NPT	25	51	42	62	54
50	200	5	3/8" NPT	30	61	45	86	48
63	200	5	3/8" NPT	35	74	54	86	51
80	200	7.5	3/8" NPT	40	96	62	62	59
100	230	7.5	3/8" NPT	50	116	75	62	67

BORE	L HOLE CENTER ROD EDGE	M SOCKET TO ENDCAP EDGE	N CENTER END CLEVIS TO ENDCAP	R HOLE DIAMETER	S END CLEVIS DIAMETER
40	16	27	15	16	30
50	20	27	16	20	32
63	20	27	16	20	32
80	26	34	20	26	40
100	32	45	25	32	50

# CYLINDER COMPONENTS

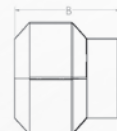
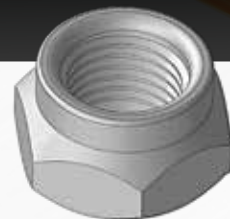


## STEEL PISTONS



BORE	DIMENSIONS	
SIZE	A	B
40	16	39
50	18	41
63	20	41
80	30	47
100	35	47
125	50	50

## PISTON NUTS



BORE	DIMENSIONS		
SIZE	A	B	C
M12X1.25	19	31	12
M16X2.0	24	27	16
M20x2.5	30	34	20
M27X2.0	41	47	27
M30K2.0	46	53	30
M39X3.0	60	67	39
M48X3.0	74	85	48

## STEEL ROD CLEVIS WS



BORE	DIMENSIONS		
SIZE	A	B	C
50	25	25	60
63	30	32	70
80	35	40	84
100	45	45	110
125	50	50	110

## STEEL ROD & BACK CLEVIS AM/WM



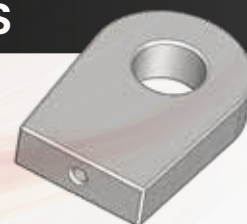
BORE	DIMENSIONS			
SIZE	A	B	C	D
50	25	25	30	40
63	30	32	35	45
80	35	40	42	55
100	45	45	55	72
125	50	50	55	82

## STEEL BASE PLATES



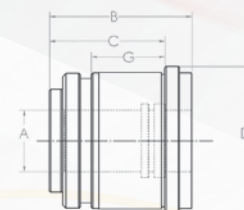
BORE	DIMENSIONS		
SIZE	A	B	C
40	50	12	3
50	60	12	3
63	73	12	3
80	95	15	4
100	115	15	4
125	145	18	5

## BACK END CLEVIS AS



BORE	DIMENSIONS			
SIZE	A	B	C	D
50	25	25	30	40
63	30	32	35	45
80	35	40	42	55
100	45	45	55	72
125	50	50	55	82

## DUCTILE IRON GLANDS



BORE	DIMENSIONS				
SIZE	A	B	C	D	G
40	20	50	40	50	17
50	30	57	43	60	18
63	35	60	44	73	21
80	45	78	59	95	32
10D	60	91	73	115	36
125	70	95	75	145	37

# CYLINDER COMPONENTS



## STEEL WELD-ON PORTS – 90° NPT



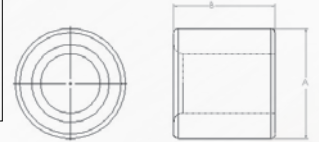
PORT SIZE	DIMENSIONS	
	A	B
1/4-18 NPT	31.8	31.8
3/8-18 NPT	31.8	39.7
1/2-14 NPT	41.3	44.5
3/4-14 NPT	50.8	49.2



## STEEL WELD-ON PORTS



PORT SIZE	DIMENSIONS	
	A	B
1/4-18 NPT	25	15
3/8-18 NPT	25	15
1/2-14 NPT	38	18
3/4-14 NPT	38	17.5
1-1 1/2 NPT	45	30



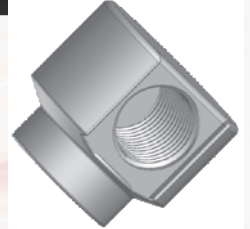
## STEEL PORT PLUGS – NPT



PORT SIZE	DIMENSIONS	
	C	D
1/4-J 8 NPT	0.25	0.44
3/8-18 NPT	0.312	0.441
1/2-14 NPT	0.375	0.59
3/4-14 NPT	0.562	0.63
1-1 1/2 NPT	0.625	0.77



## STEEL WELD-ON PORTS – 90° SAE

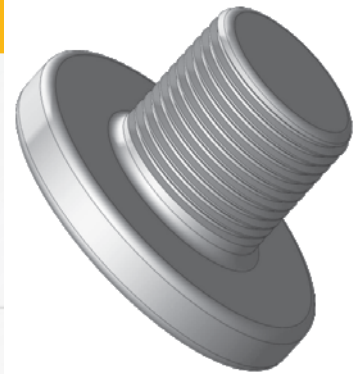
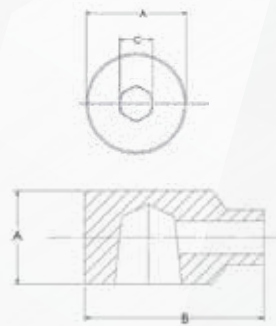


PORT SIZE	DIMENSIONS	
	A	B
SAE 4	28.6	28.6
SAE 6	31.8	31.8
SAE 8	41.3	41.3
SAE 10	44.5	47.6

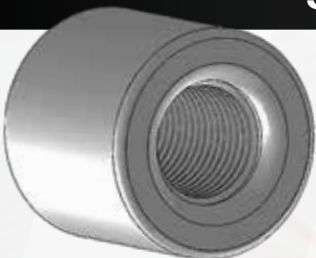


## STEEL PORT PLUGS – SAE

PORT SIZE	DIMENSIONS			
	A	B	C	D
SAE 4	14.2	11.4	4.8	9.1
SAE 5	16.0	11.4	4.8	9.1
SAE 6	17.5	12.2	6.4	9.9
SAE 8	22.1	14.2	7.9	11.2
SAE 10	25.4	16.0	9.4	12.7
SAE 12	31.8	19.1	14.2	15.0
SAE 16	38.1	19.1	16.0	15.0



## STEEL WELD-ON PORTS – SAE



PORT SIZE	DIMENSIONS	
	A	B
SAE 4	19.1	15.9
SAE 5	22.2	14.3
SAE 6	22.2	17.4
SAE 8	28.6	17.4
SAE 10	31.8	22.2
SAE 12	38.1	25.4
SAE 16	44.5	31.8



# CYLINDER CUSTOM SYLINDER WORKSHEET



For a no obligation price quote for your custom hydraulic needs, please duplicate and complete this form & send email to sales@seahydrosys.com. If you prefer, provide your contact information on this page and follow with your cylinder print. All information will be confirmed in writing.

## Quantity to quote:

Annual Usage  Monthly Usage  One-Time

## CUSTOMER INFORMATION

Customer ID : .....

Company Name : .....

Contact Name : .....

Address : .....

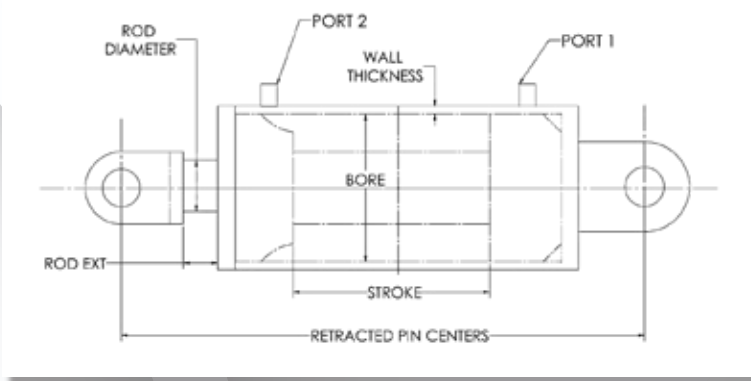
.....

.....

Tel : ..... Fax : .....

Email : .....

## DIMENSIONAL INFORMATION

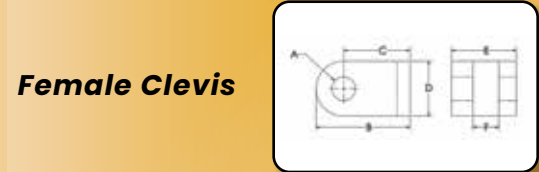


<b>Bore:</b>	<b>Rod End Port: Size:</b>	<b>Measurement Increments</b>
<b>Wall Thickness:</b>	Type SAE	Inches / PSI
<b>Stroke:</b>	NPT BSPP	Millimeters / Bar
<b>Retracted Pin Centers:</b>	Other Location	
<b>Working Pressure:</b>	<b>Rod End Port: Size:</b>	
<b>Rod:</b> Diameter Extension	Type SAE NPT BSPP Other	
<b>Type:</b> Standard Induction Hardened Nickel Stainless Steel		

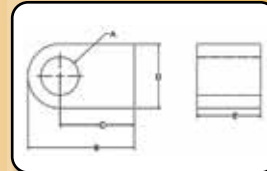
## MOUNTING OPTIONS



**Cross Tube**



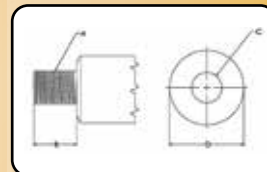
**Female Clevis**



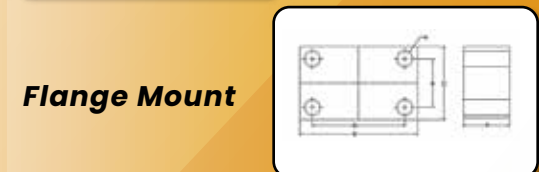
**Male Clevis**



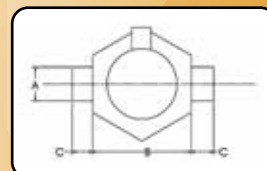
**Hole Through Rod**



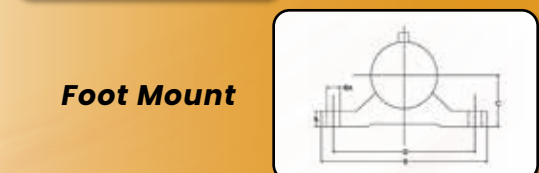
**Threaded End**



**Flange Mount**



**Trunnion Mount**



**Foot Mount**

Other mountings are also available.

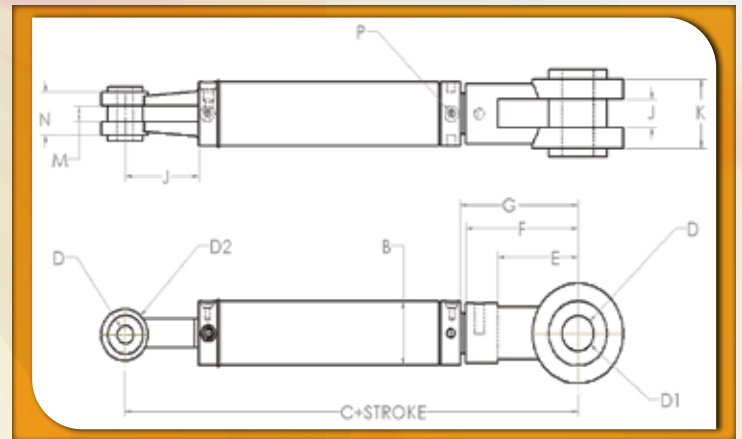
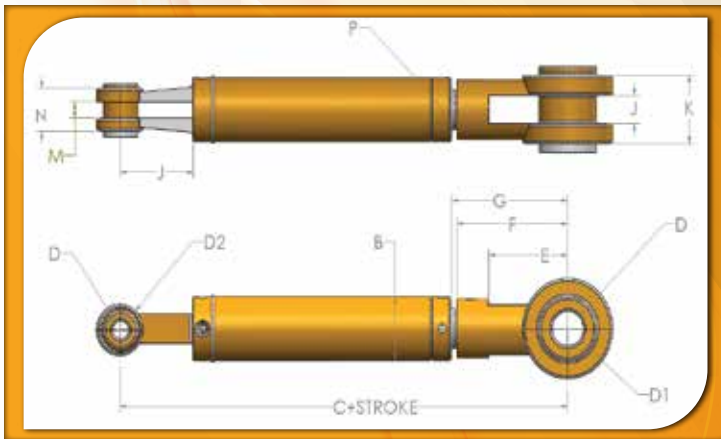
## APPLICATION INFORMATION

- \* Is the cylinder used for pulling? YES / NO
- \* Is the cylinder used for holding in a certain position for long periods? YES / NO
- \* For what purpose will the cylinder be used? .....
- .....
- .....

# CYLINDER HWP

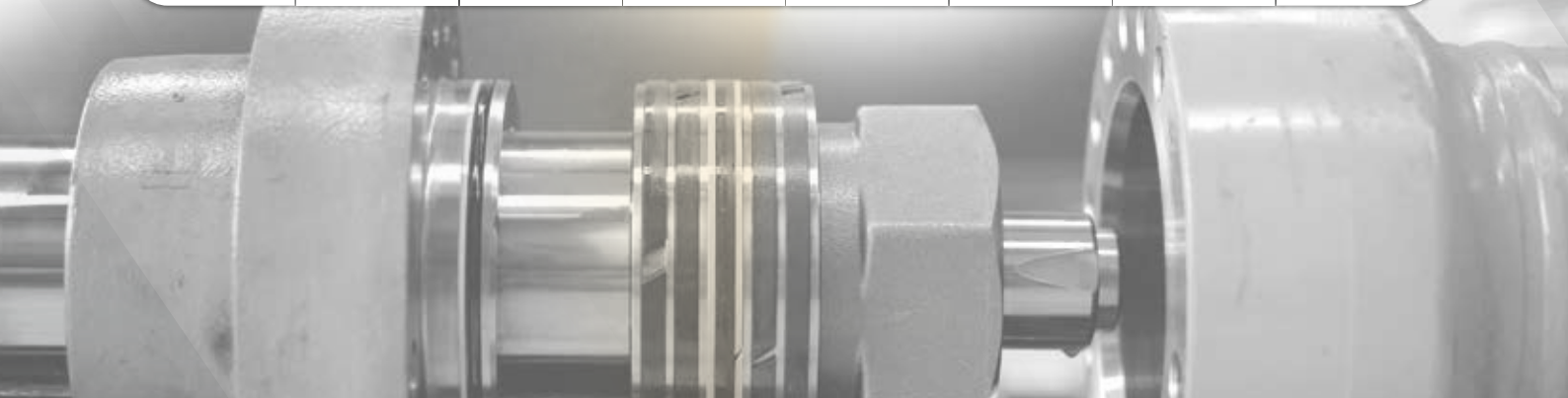


**Intended Use:** Double-acting applications • **Piston:** Steel • **Gland:** Ductile iron • **Tube:** Skived steel, precision finished for extended seal life • **Rod:** High tensile, hard chrome plated • **End Mounts:** Cross tubes • **Tube Seal:** Buna O-ring twith Polytemp hytrel back-up • **Rod Seal:** Polyurethane u-cup • **Rod Wiper:** Polyurethane, snap-in • **Piston Seal:** 5-piece; (1 ea.) seal, (2 ea.) anti-extrusion rings, (2 ea.) wear bearings • **All Seals:** Manufactured to US specifications • **Paint:** Blue. Custom colors are available • **Packaging:** Individually poly bagged



BORE	A	B	C	D	D1	D2	E	F
1.5"	Ø 0.875"	Ø 1.875"	241	Ø 19.5	Ø 45	Ø 46	38	63.5
2"	Ø 1.125"	Ø 2.375"	311	Ø 25.5	Ø 54	Ø 50.8	50.8	84.5
2.5"	Ø 1.5"	Ø 2.875"	311	Ø 25.5	Ø 54	Ø 50.8	50.8	84.5
3.0"	Ø 1.5"	Ø 3.375"	311	Ø 25.5	Ø 54	Ø 50.8	50.8	84.5
3.5"	Ø 1.75"	Ø 3.875"	311	Ø 25.5	Ø 64	Ø 50.8	55	84
4.0"	Ø 2.0"	Ø 4.5"	311	Ø 25.5	Ø 64	Ø 63.5	55	84

BORE	G	J	K	L	M	N	P
1.5"	69.5	23/23.5	52	38	20	47	9/16"-18UNF
2"	95.7	28.6/29.1	66.7	54	29	62.4	3/4"-16UNF
2.5"	95.9	28.6/29.1	66.7	54	29	62.4	3/4"-16UNF
3.0"	89.5	28.6/29.1	66.7	47.6	29	66.6	3/4"-16UNF
3.5"	88	28.6/29.1	72	47.6	29	66.6	3/4"-16UNF
4.0"	89	28.6/29.1	72	44.5	29	66.6	3/4"-16UNF




# CONTACT US

**Mr.Aathif** Ph: +91 99529 71790

**Mr.Abith** Ph: +91 92821 52525

 [precisionbrightcomponent@gmail.com](mailto:precisionbrightcomponent@gmail.com)

 [www.precisionbrightcomponent.com](http://www.precisionbrightcomponent.com)

 G-1/2, 3rd Cross Road, SiPCOT Industrial Park,  
Vallam-Vadagal, Sriperumbudur Taluk, Kanchipuram  
District-602105. TAMILNADU INDIA.



Scan for PDF Brochure



## Some Popluar Steel Grades for Machining

EN1A	EN1A(L)	EN32B	EN3B	EN3A
EN8	EN8D	EN9	EN19	EN18D
S20C	S25C	S45C	CF45	C50
S50C	C35	C40	C45	C50
C20	C20CR	C15CR	30CR	35CR
40CR	45CR	50CR	1010	1018
1020	1030	1035	1040	1045